

MONTERINGSANVISNING

INSTALLATION GUIDE

- SV** Jordfläta för brunnar och rännor
NO Jordflette for brønner og renner
EN Earth braid for drains and channels

FURO

Furhoffs



AB Furhoffs Rostfria

Box 93, 54122 Skövde, Sweden
www.furhoffs.se • info@furhoffs.se
Tel +46 (0) 500 44 45 46



AB Furhoffs Rostfria

Box 93, 54122 Skövde, Sweden
www.furhoffs.se • info@furhoffs.se
Tel +46 (0) 500 44 45 46

SV

Typ av fästöra:

- A. Fästöra multi, brunn
- B. Fästöra, brunn
- C. Fästöra, överdel brunn
- D. Fästöra multi, ränna
- E. Fästöra ränna

NO

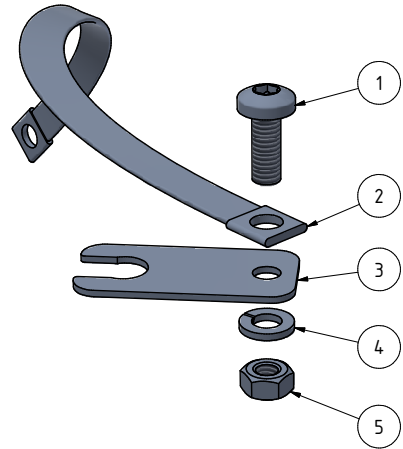
Type av festøre:

- A. Festøra multi, brønn
- B. Festøra, brønn
- C. Festøra, overdel brønn
- D. Festøra multi, renne
- E. Festøra, renne

EN

Type of mounting ear:

- A. Mounting ear multi, drain
- B. Mounting ear, drain
- C. Mounting ear, top section drain
- D. Mounting ear multi, channel
- E. Mounting ear, channel

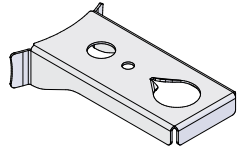


SV/NO/EN

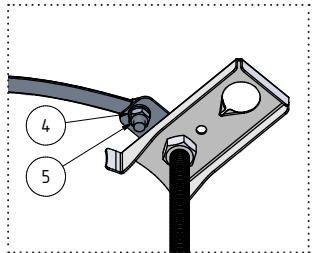
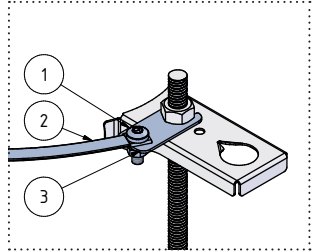
Ingår/Inkludert/Included:

- 1. Skruv/Skrue/Screw
- 2. Jordfläta/Jordflette/Earth braid
- 3. Multibricka/Multibrykke/Multi-washer
- 4. Fjäderbricka/Fjærbrikke/Spring washer
- 5. Mutter/Mutter/Nut

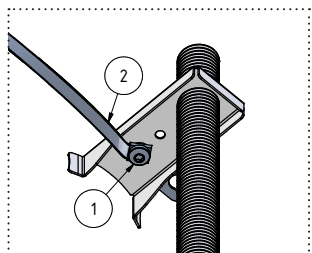
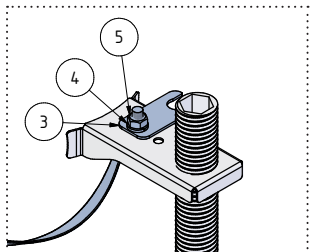
A



Alt. 1



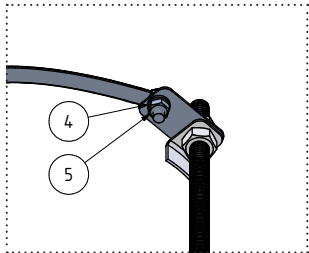
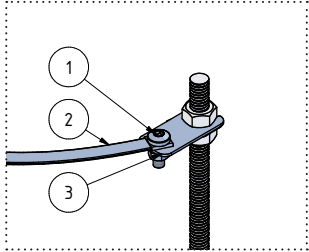
Alt. 2



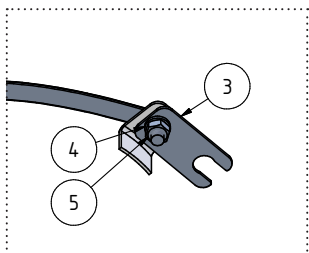
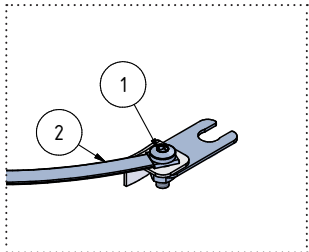
B



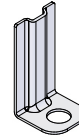
Alt. 1



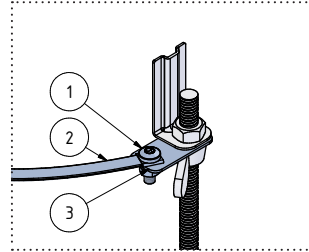
Alt. 2



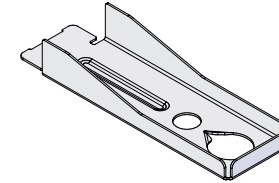
C



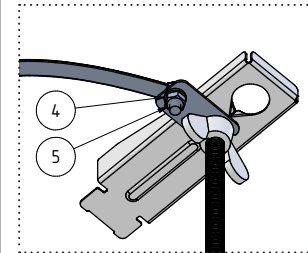
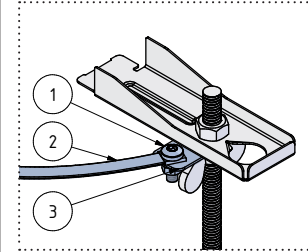
Alt. 1



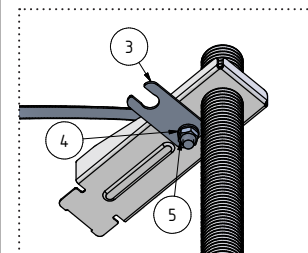
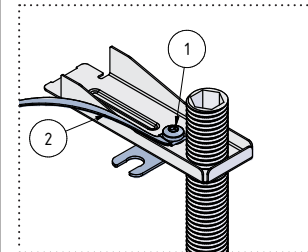
D



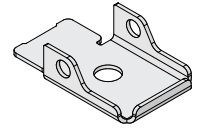
Alt. 1



Alt. 2



E



Alt. 1

